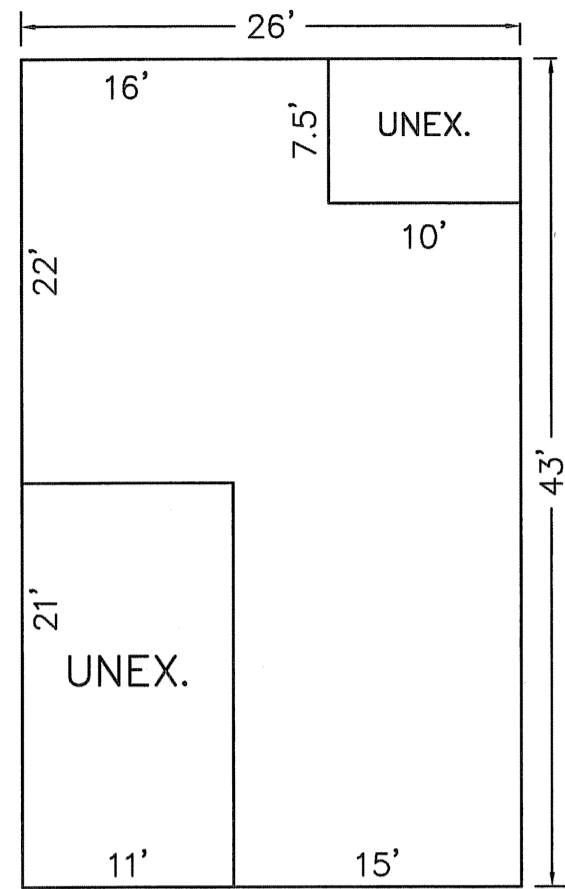
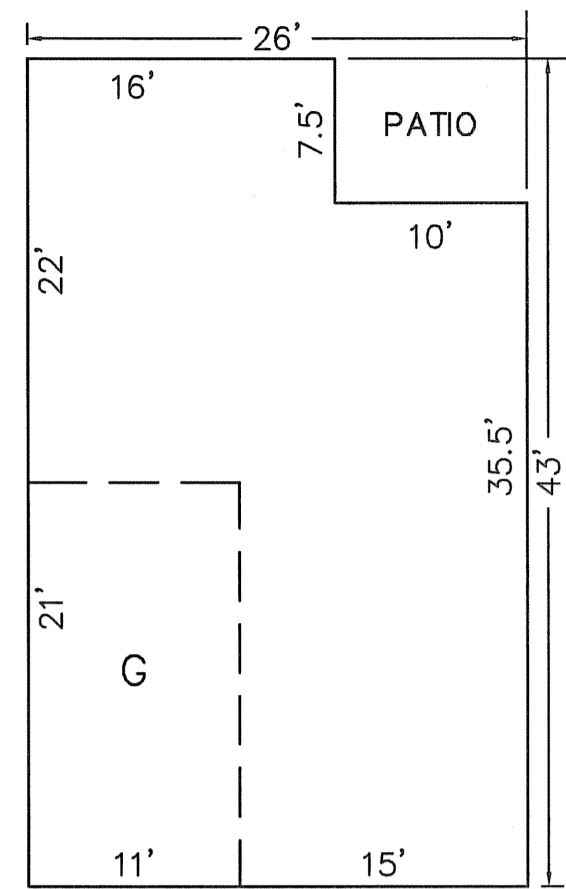


BLOCK 702 - LOT 34

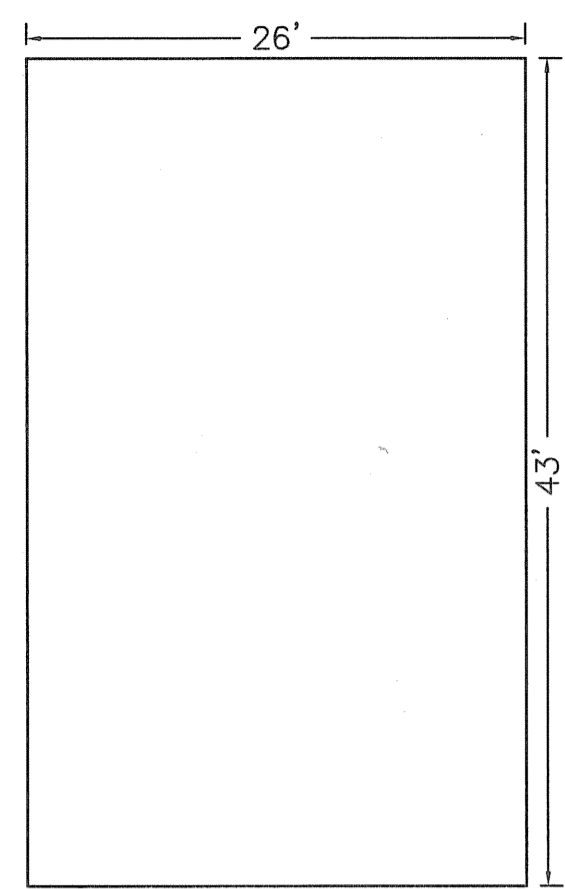
BLOCK 2903 - LOT 6
BLOCK 2904 - LOT 1



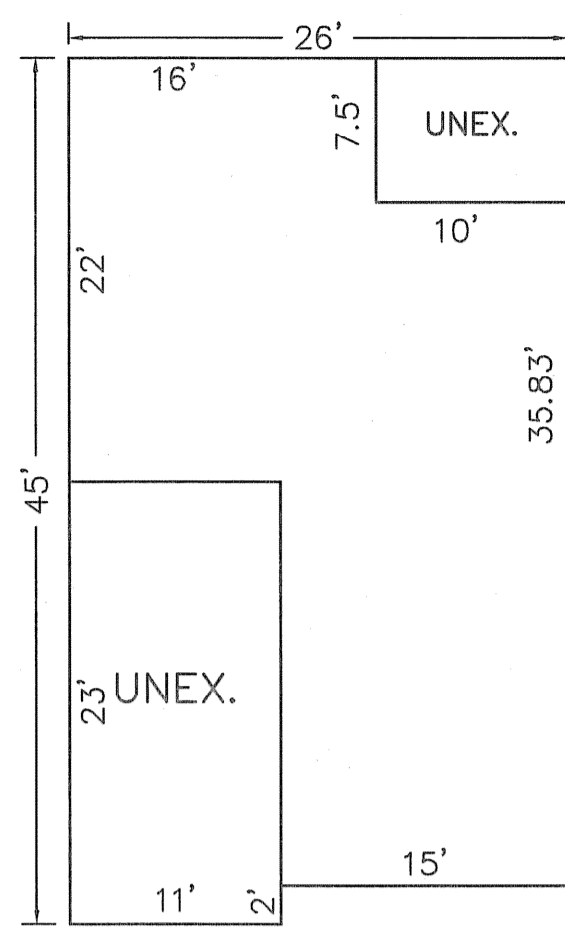
UNITS A-B-D
BASEMENT
812 S.F.



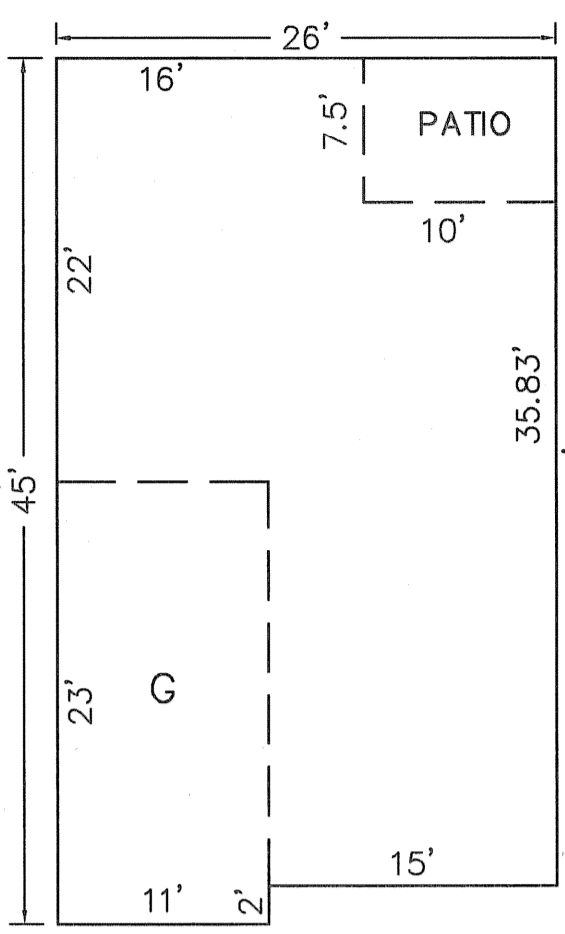
UNITS A-B-D
FIRST FLOOR
1,043 S.F.



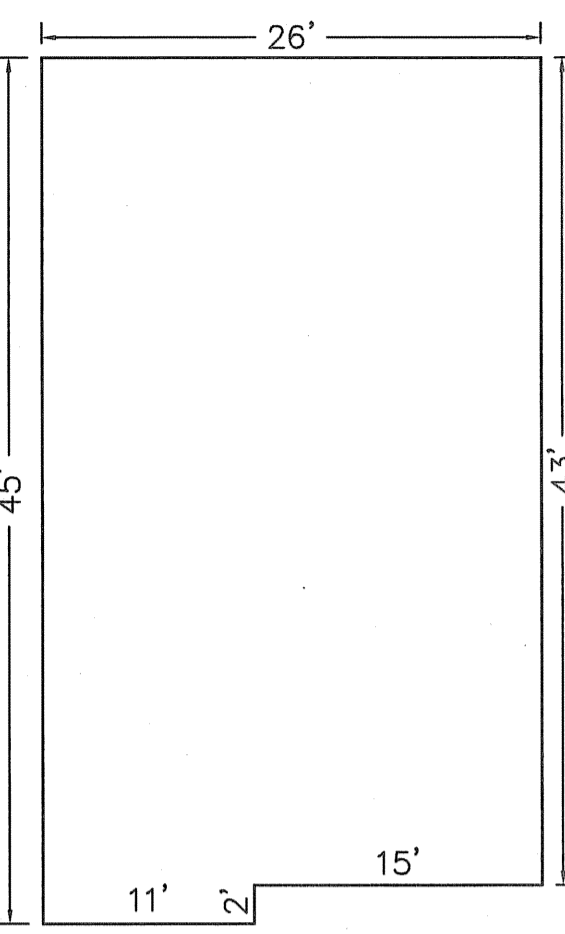
UNITS A-B-D
SECOND FLOOR
1,118 S.F.



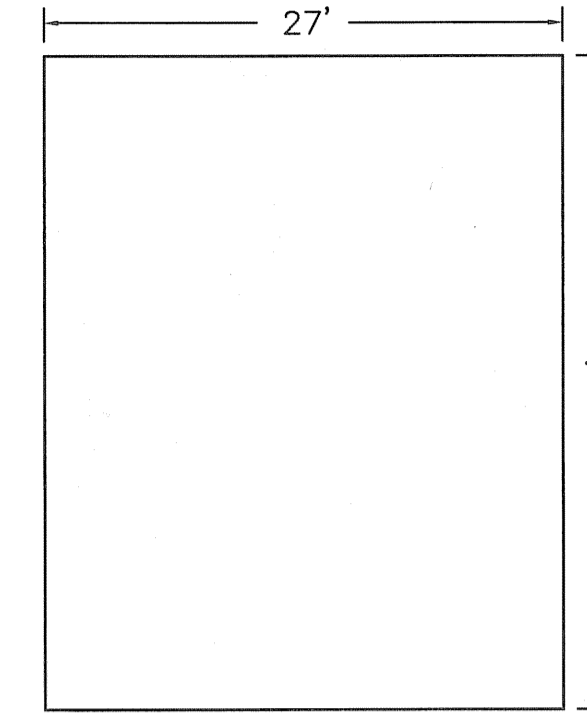
UNITS C-E
BASEMENT
812 S.F.



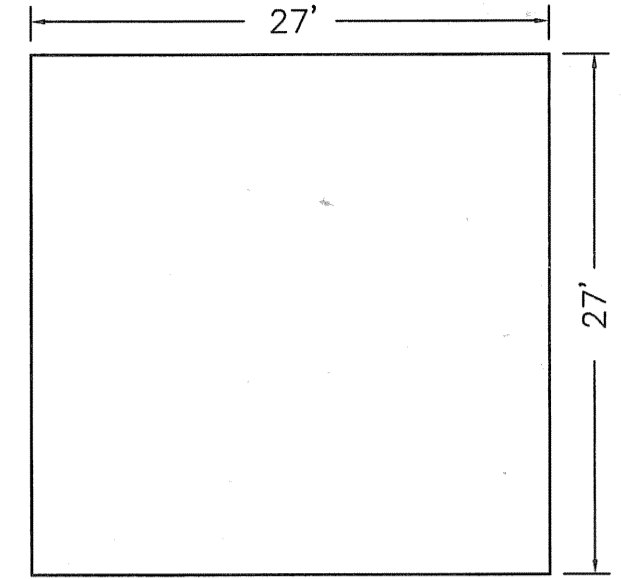
UNITS C-E
FIRST FLOOR
1,065 S.F.



UNITS C-E
SECOND FLOOR
1,140 S.F.



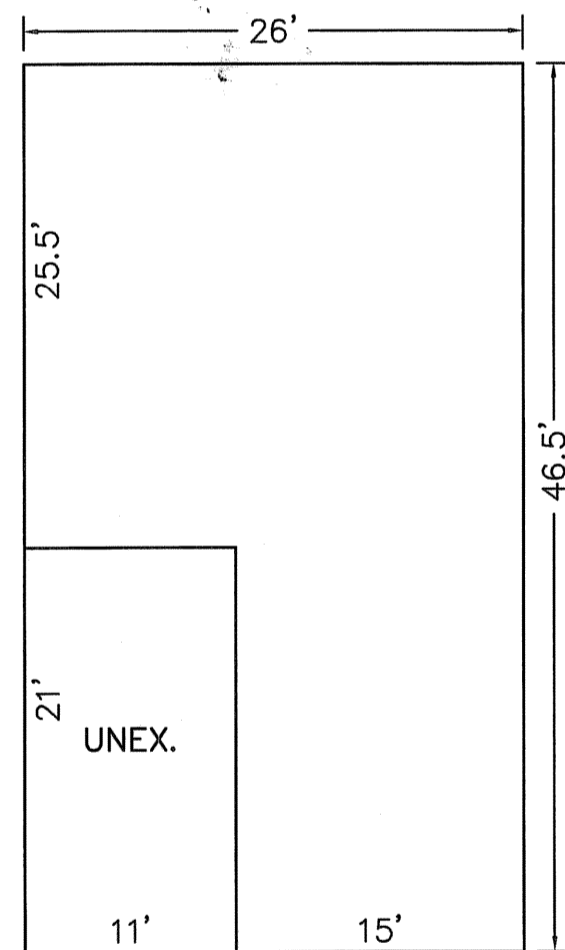
UNIT A
918 S.F.



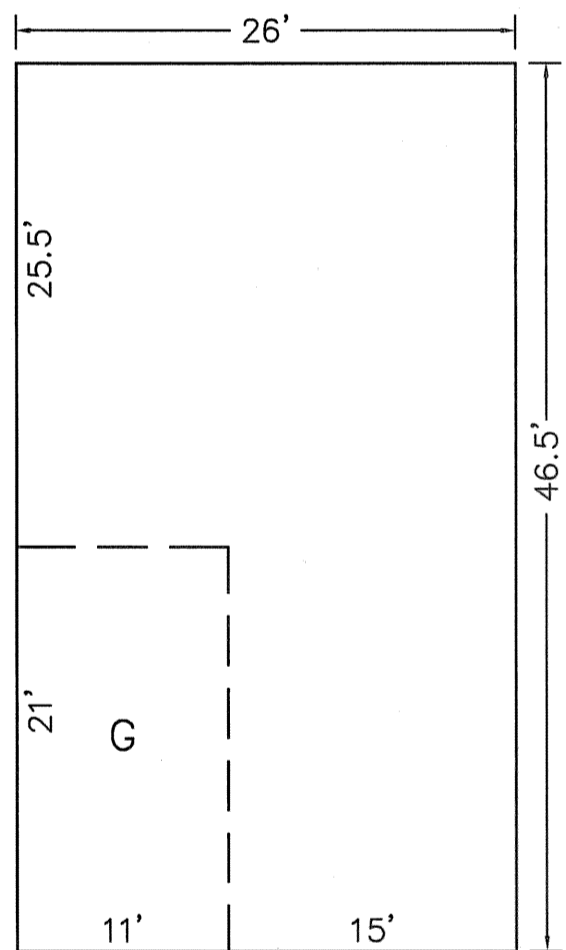
UNIT B
729 S.F.

BLOCK 702 - LOT 37

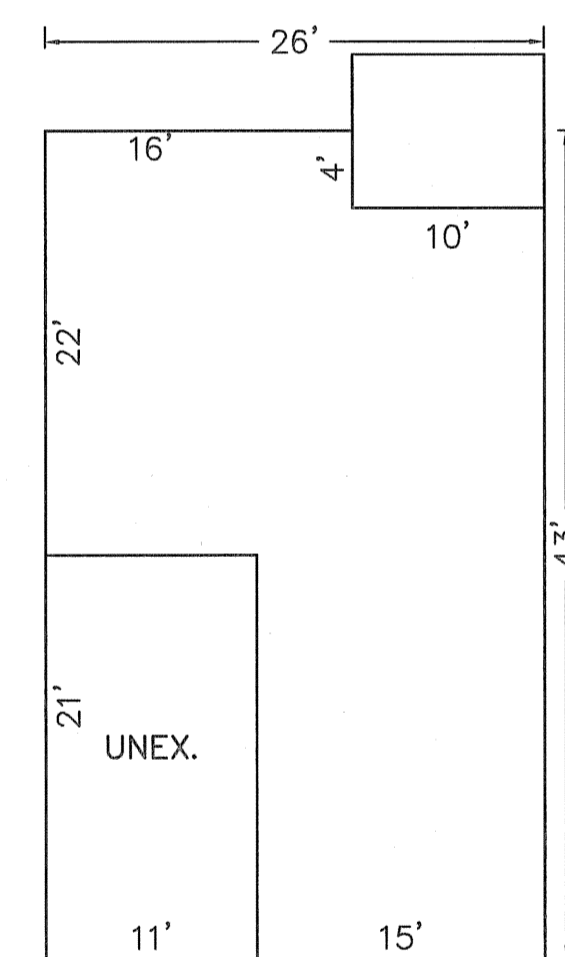
BLOCK 703 - LOT 13



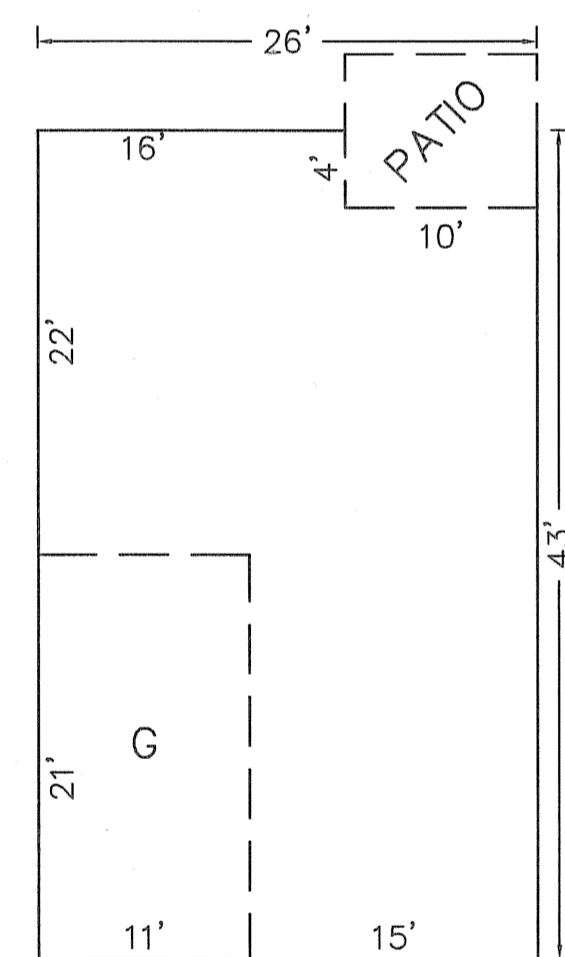
UNIT L
BASEMENT
978 S.F.



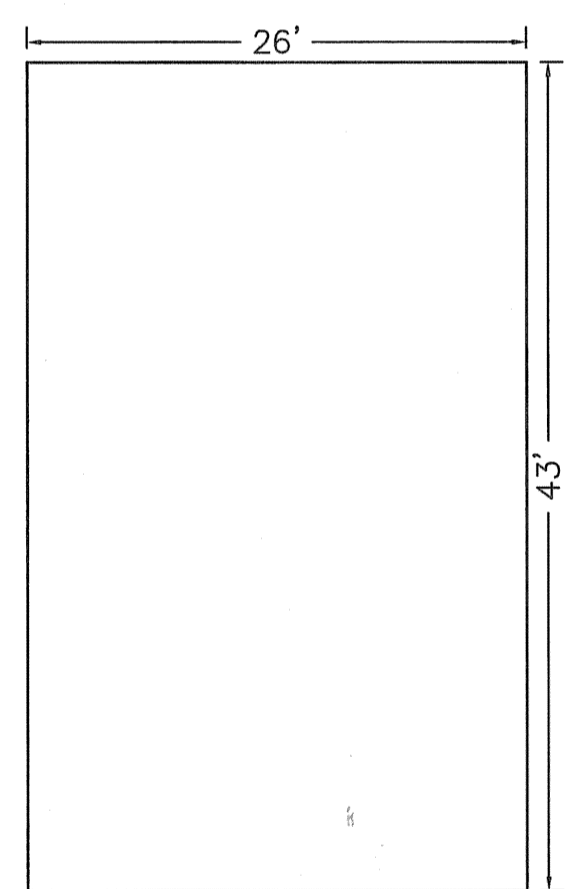
UNIT L
FIRST & SECOND FLOOR
978 S.F.
1,209 S.F. TOTAL



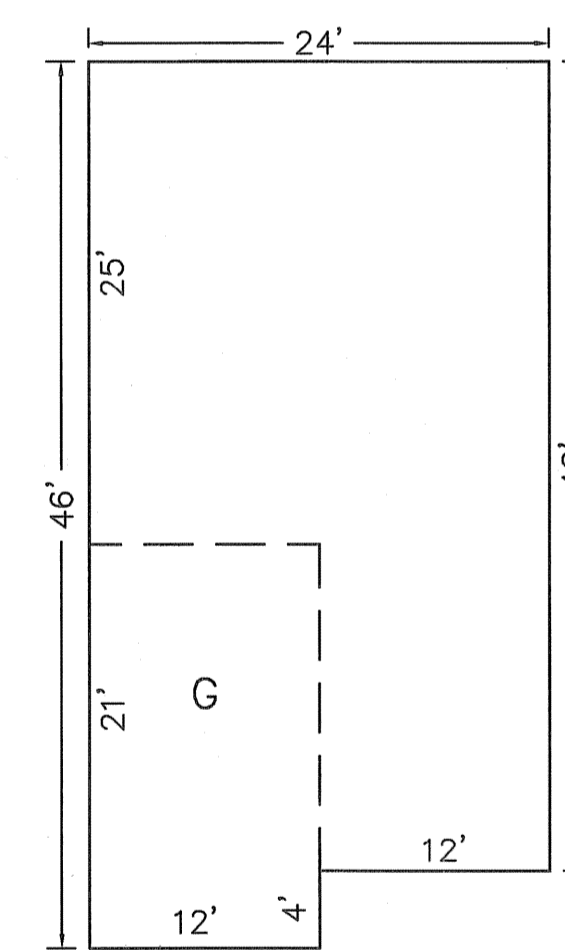
UNIT Y
BASEMENT
1,078 S.F.



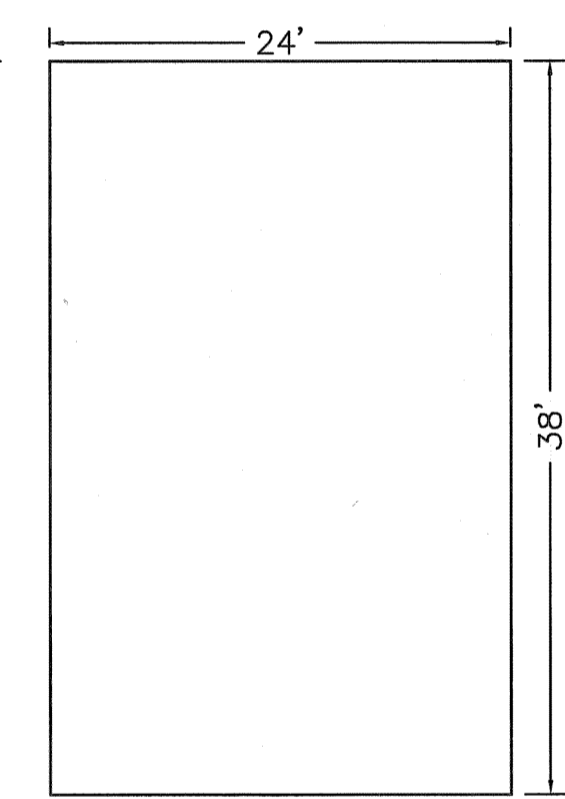
UNIT Y
FIRST FLOOR
1,078 S.F.



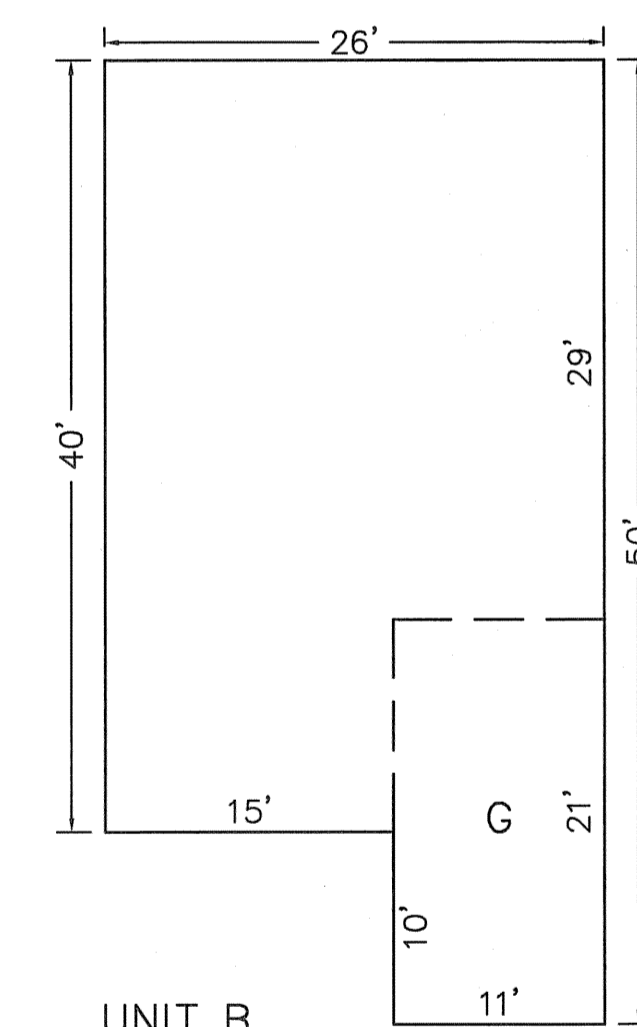
UNIT Y
SECOND FLOOR
1,118 S.F.



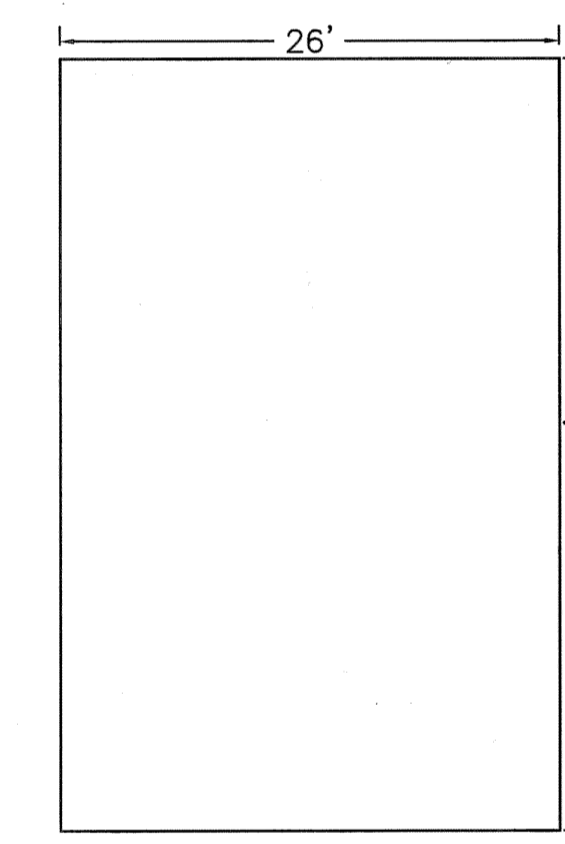
UNIT A
FIRST FLOOR
1,056 S.F.



UNIT A
SECOND FLOOR
912 S.F.



UNIT B
FIRST FLOOR
1,150 S.F.



UNIT B
SECOND FLOOR
1,040 S.F.

NEW JERSEY DEPARTMENT OF THE TREASURY
DIVISION OF TAXATION
PROPERTY ADMINISTRATION
APPROVED AS A TAX MAP PURSUANT TO THE AUTHORITY OF
N.J.A.C. 17:27 & 17:28
FOR THE DEPARTMENT OF TAXATION
JAMES J. COLE, CHIEF, LOCAL TAX COMPLIANCE C.T.A.
SANTO C. DEBONATO, SUPERVISING FIELD REPRESENTATIVE C.T.A.
DATE: OCT 31 2005 REHAL NO. 904

TAX MAP
BOROUGH OF MONTVALE
BERGEN COUNTY NEW JERSEY
SCALE: 1" = 10' JANUARY 1, 1989
LOUIS A. RAIMONDI, P.E., P.L.S.
RAIMONDI ASSOCIATES, P.A.
220 KINDERKAMACK ROAD
WESTWOOD, NJ 07675